

Basic Troubleshooting

LED not displayed

Check the power source is correct voltage and correct polarity.

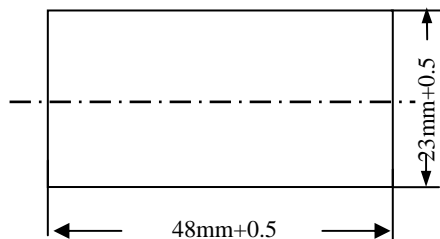
Display appears scrambled

Check that all connections are correct and tight.
Check that there is no harsh interference nearby.

Just display 999

Voltage out of range.
Check the connection of signals cable.

Installation Size



XL3DC99V Series

Digital Panel Meter MANUAL

XIELI ISO9001-2008 & CE

Shaanxi XIELI Photo Electric Instrument Co., Ltd

Add: No.2 Xinke Rd, Eastern Development Zone,
Xi'an 710043, Shaanxi, CHINA
Tel: +86-29-82621387 Fax:+86-29-84023638
Email: info@xieli-china.com
Website: www.xieli-china.com

XL3DC99V Series Digital Voltmeter

Power Source DC5V or DC12V measure DC voltage

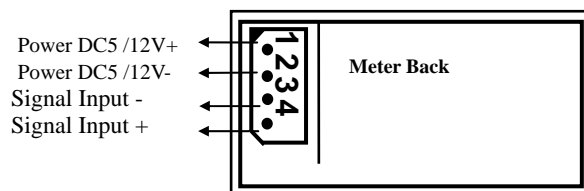
FEATURES:

- Ultra-bright LED display
- Red, Blue, Green display available
- Polarity: Automatic Sensing
- Automatic Calibration upon zero reading for 0V input
- High accuracy and Low cost
- Easy to install
- Re-calibrated by adjusting the calibration potentiometer
- Ideal for auto, boat, industrial, commercial & domestic uses
- Decimal Point Position can be selected by user

OPERATION SPECIFICATIONS:

Power Source	DC5V or DC12V
Maximum Count	999 (3 digit)
Operating Temperature	0 to 55°C
Storage Temperature	-10 to 80°C
Relative humidity	20%~80%
Weight	30-35g
Dimension	W50mm x H26mm x D23.5mm
Panel Cutout	48mm×23mm
Sample Frequency	400ms

WIRING DIAGRAM:



- PIN 1: DC5V + or DC12V + (Positive pole)
- PIN 2: DC5V - or DC12V- (Negative pole)
- PIN 3: Signal Input - (Negative pole)
- PIN 4: Signal Input + (Positive pole)

CAUTION

Do not disassemble
The power polarity is not reversed

PARAMETER

	Model	Range	Resolution	Accuracy
	XL3DC99V-1	DC9.99V	10mV	± 0.3%+1digit
•	XL3DC99V-2	DC99.9V	100mV	± 0.5%+1digit